

VILLAS AT

# WAIKIKI

Home that our feet may leave, but not our hearts.

*Ikaare*



# WAIKIKI

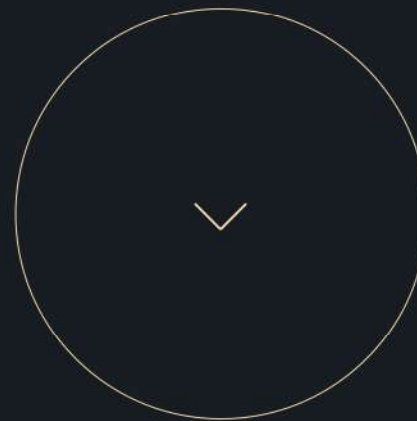
*Ikaare*

---

Waikiki Villas in Ikaare, Lagos State is the brainchild of Toll Brothers.

It is a collection of pristine, expertly designed apartments with  
luxury amenities, services, and high-end features.

---



# Content

About

4

Inspiration

5

Features

7

Plans

8

3D Views

12

Location Attraction

13

Cost

14



# About



Villas at Waikiki seamlessly blends the splendor and sophistication of a high end residential community with the aura and spirit of a vacation destination, to create a truly unique experience. It's almost like you're on vacation right in your neighborhood.

An open yet extremely secure environment where everyone can flourish, it offers timeless living in luxuriously crafted apartments. Distinguished by architecture that takes its cue from global standards in luxury, and with interior configurations to meet the requirements of many different households and lifestyles.

*State of the Art*



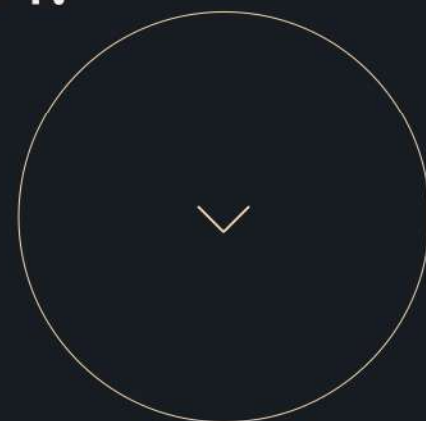
# PEAK

# OF

*Luxury*

HIGH-END RESIDENCES  
WITH A WELL-DEVELOPED  
INFRASTRUCTURE WITHIN A  
MINUTE OF IKAARE BEACH.

Apartments from 64 to 301 SQM with terraces  
and patios in a closed territory, in one of the  
best destinations in Africa.



# Close Landmarks



Kamp Ikaare Resort



Ikaare Beach



1

Min

Villas @ Waikiki merges smoothly with the Ikaare Beach – one of Lagos' most sought after vacation destinations, and citizens' leisure spot of choice. Designed for smooth walks and recreational activities, it is just a minute walk from the beach. Draw in a great lungful and feel this vast expanse for new accomplishments, courtesy of Toll Brothers.





Massage Rooms



Games Arena



Pool



Staff Quarters



24-Hour Security



Gym



Play Area



Sunken Lounge



Jacuzzi



24-Hour Power



Onsite Housekeeper



Onsite Chef



Facility Management



Industrial Kitchen



Store

WELLTHOUGHT-THROUGH  
DESIGN THAT BRINGS  
CONVENIENCE AND THE  
SENSE OF SECURITY.

Statement-making apartments with  
exceptionally styled interiors. Fully equipped to  
meet your needs, with ample space and  
privacy.

# Inspiration



"Light belongs to the heart and spirit. Light attracts people, it shows the way, and when we see it in the distance, we follow it."

Ricardo Legorreta – Architect



*Natural Light*

"The greatest architecture is building character."

Lewis F. Korn - Inventor



# Facade

"The good building is not one that hurts the landscape, but one which makes the landscape more beautiful than it was before the building was built"

Frank Lloyd Wright – Architect



# Landscape

# Features



# SITE PLAN



# Site Plan 3305.917 SQM

- 1
- 2
- 3
- 4
- 5
- 6
- 7



## LEGEND

- 1. Total Building Area-2108SQM
- 2. Total Site Area- 3305.917SQM
- 3. Main Building- 1789SQM
- 4. Boys Quarter- 166SQM
- 5. Gate & Gen House- 153SQM
- 6. Driveway- 816.952SQM
- 7. Outdoor Sitting- 748SQM
- 8. Play Area- 299.106SQM
- 9. Sand Area- 253SQM
- 10. Swimmiiing Pool -73SQM
- 11. Sunken Lounge (2) - 15SQM Each



# GROUND

# FLOOR





692 SQM.

THERE IS SOMETHING FOR  
EVERYONE, FIND YOUR  
FAVORITE SPACE.

The 692 SQM area houses most of the Villa's amenities which include the Gym, Staff Quarters, Massage Rooms, Play Area, etc. Carefully designed layouts and exquisite finishing options will help you feel right at home in Waikiki.

*Check floor plan for a complete list of features.*



Massage Rooms



Games Arena



Pool



Staff Quarters



Gym



Play Area



Sunken Lounge



Jacuzzi

---

SO MANY OPTIONS FOR  
EVERY RESIDENT TO FIND  
A FAVOURITE PLACE OF  
THEIR OWN.

Statement-making amenities with exceptional finishing, tastefully furnished and fully equipped to meet your needs, with ample space and privacy.

The first-grade service provided in Waikiki Villas is something any widely-traveled fun-seeker dreams of. At the disposal of the villa residents are all essential amenities and service areas, available right here and now.

*Make a  
dreams*





Everything you need to remain in great form and stay healthy. Exercise under a trainer's supervision or do your own workouts, peacefully treat yourself with a few hours of SPA, after sauna and massage, it feels so great to put the world around you on pause and just enjoy the quietness over a glass of vintage wine.



# Ground Floor Plan

- 1
- 2
- 3
- 4
- 5
- 6
- 7



## LEGEND

1. Entrance - 8SQM
2. Gatehouse - 13SQM
3. Gate House Bath - 4SQM
4. Panel Room - 11SQM
5. Lobby - 12SQM
6. Gen. House - 39SQM
7. Energy Room - 14SQM
8. Lounge - 24SQM
9. Gate House Bedroom - 16SQM
10. Gate House Bath (2) - 6SQM
11. Kitchenette - 6SQM
12. Industrial Kitchen - 40SQM
13. Store - 12SQM
14. Cold Store - 9SQM
15. Dry Store - 9SQM
16. BQ (6) - 12SQM Each
17. BQ Bath (6) - 4SQM Each
18. Restaurant - 109SQM
19. Kitchenette - 3SQM
20. Male Toilet - 3SQM
21. Male Toilet Cubicle (7) - 2SQM Each
22. Female Toilet - 33SQM
23. Female Toilet Cubicle (5) 2SQM Each
24. Female Toilet Cubicle (1) - 3SQM
25. Games Arena - 54SQM
26. Gym - 66SQM
27. Massage Room - 22SQM
- Total Area - 692SQM

# FIRST FLOOR





838 SQM.

A BRIGHT SPACE, IMPRESSIVE  
AND ENJOYABLE NO MATTER  
THE SEASON OR TIME OF DAY.

The 838 SQM area houses some of the Villa's apartments which consists of the living area and its accompanying amenities. The interiors resonate with the style of the open recreation area, while also acknowledging the need for homeliness and privacy, underlining the shared architectural concept.

*Check floor plan for a complete list of features.*





Living Area



Terrace



Bathroom

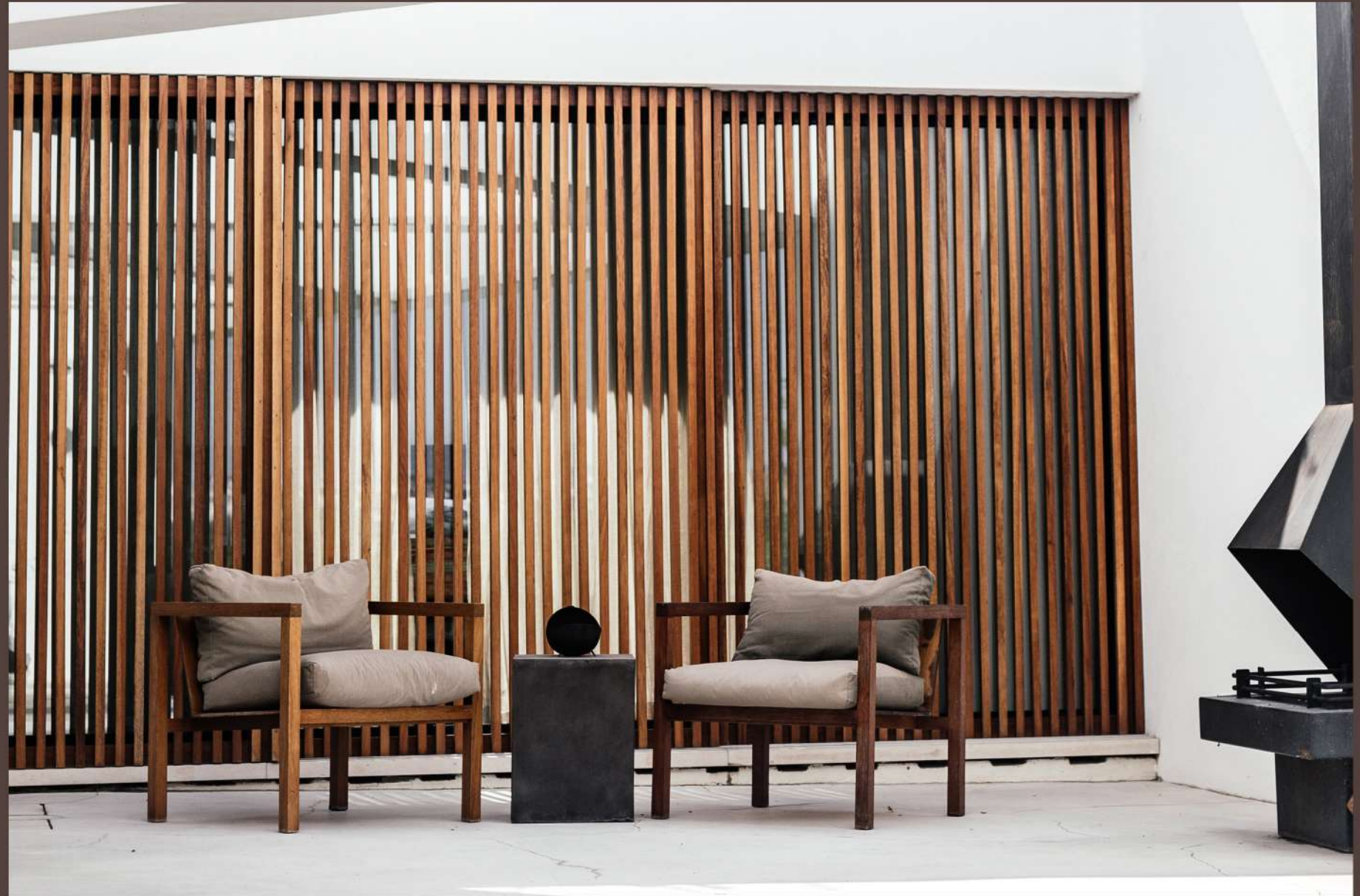
ENJOY THE REFLECTION  
OF DAYLIGHT POURING  
INTO THE PANORAMIC  
WINDOWS.

The neutral color palette brings to the forefront the elegant textures of the materials: natural stone, terrazzo, glass, and fabric.

# Convenience

While designing Waikiki Villas, we strove to create a convenient space for each and every resident. We started with developing the layouts: thought-through, sensible and bringing you the feeling of convenience and security.



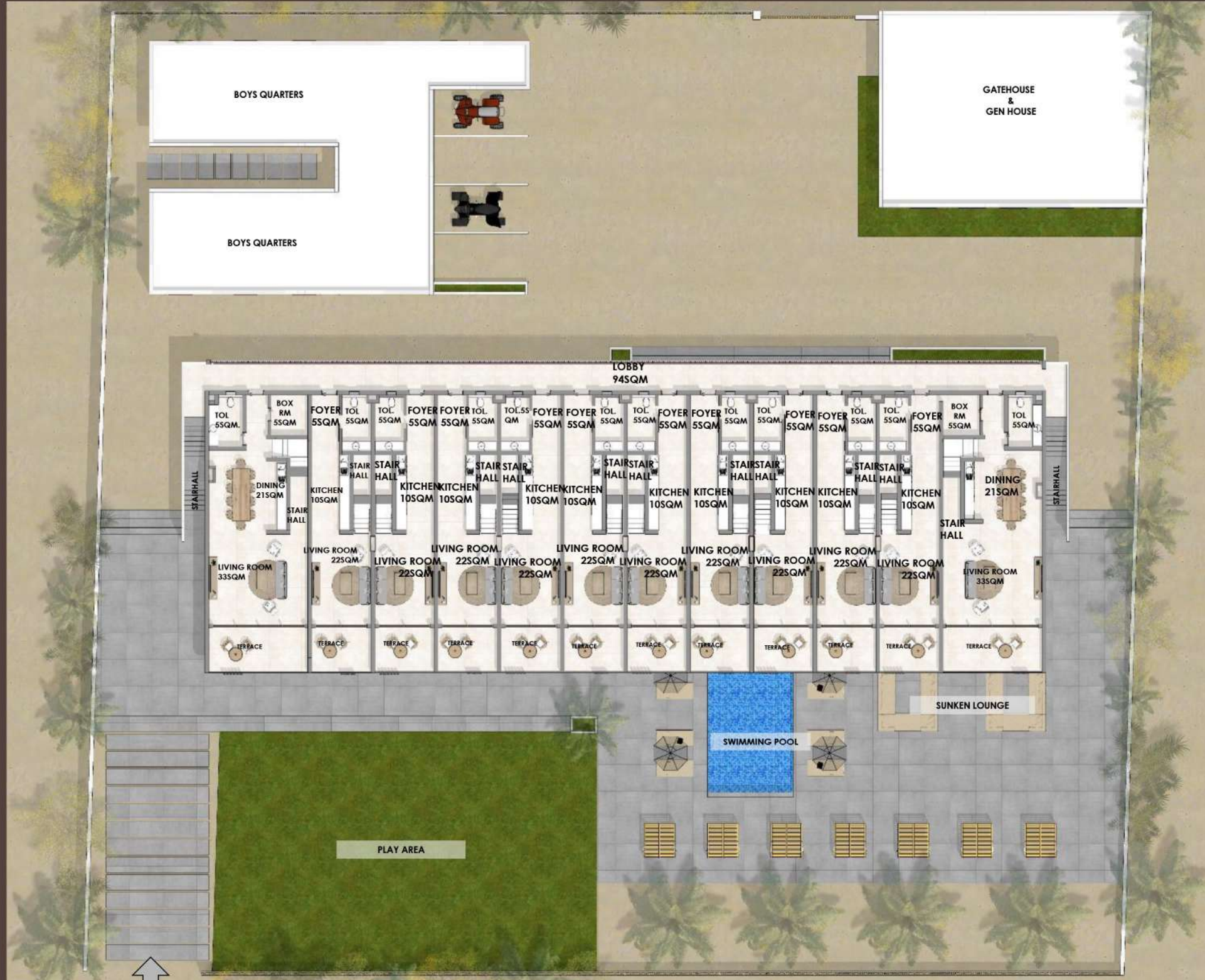


Harmony of contrasts. Yin and yang. In Neo-classic, love of tradition and openness to new coexist harmonically. Strict geometry and concise palette complement each other and create a space you are bound to love.



# First Floor Plan

- 1
- 2
- 3



## LEGEND

1. Lobby - 94SQM

### TYPICAL APARTMENT (2)

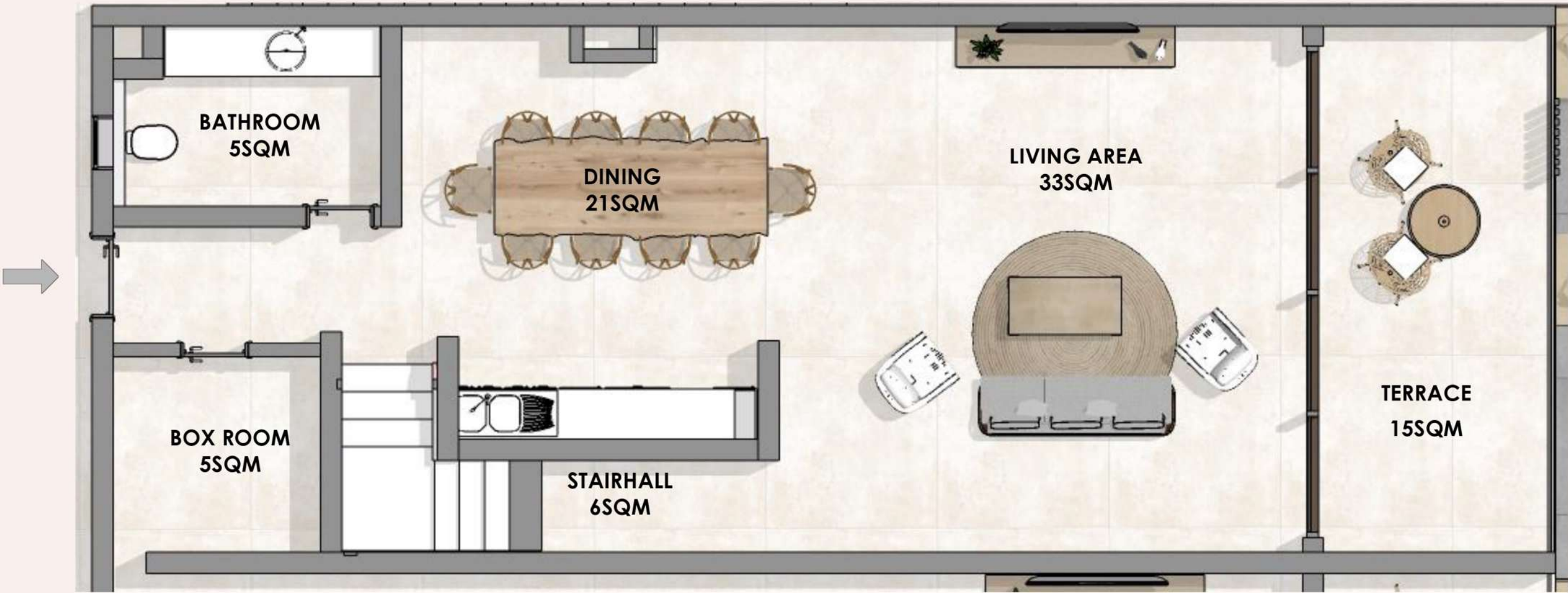
- 1. Terrace - 15SQM
- 2. Living Room - 33SQM
- 3. Kitchen - 21SQM
- 4. Toi - 5SQM
- 5. Box Room - 5SQM
- 6. Stairhall - 6SQM

### TYPICAL APARTMENT (10)

- 1. Terrace - 9SQM
- 2. Living Room - 22SQM
- 3. Kitchen - 10SQM
- 4. Toi - 5SQM
- 5. Foyer - 5SQM
- 6. Stairhall - 5SQM

Total Area - 838SQM

First Floor Plan - Typical Apartment Layout (Blow-Out) - 92SQM

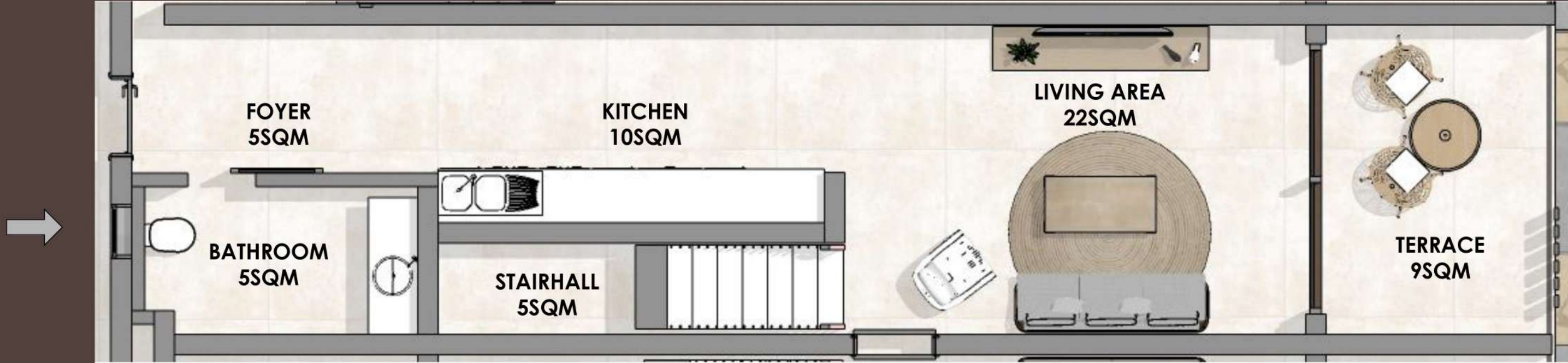


APARTMENT TYPE A

LEGEND

- 1. Terrace - 15SQM
- 2. Living Room - 33SQM
- 3. Kitchen - 28SQM
- 4. Toi - 5SQM
- 5. Box Room - 5SQM
- 6. Stairhall - 6SQM
- Total Area - 92SQM**

First Floor Plan - Typical Apartment Layout (Blow-Out) - 56SQM



APARTMENT TYPE B

LEGEND

- 1. Terrace - 9SQM
- 2. Living Room - 22SQM
- 3. Kitchen - 10SQM
- 4. Toi - 5SQM
- 5. Foyer - 5SQM
- 6. Stairhall - 5SQM
- Total Area - 56SQM**

# SECOND FLOOR





578 SQM.

AN INTERIOR THAT BALANCES  
GOOD TASTE WITH COSINESS  
AND UTILITY.

An interior where good taste is balanced with supreme cosiness while concise decor details harmonise with delicate warm tones. Feel serenity after a busy day, and the stylish setting will inspire your upcoming accomplishments.

*Check floor plan for a complete list of features.*





Bedroom



Terrace



Toilet

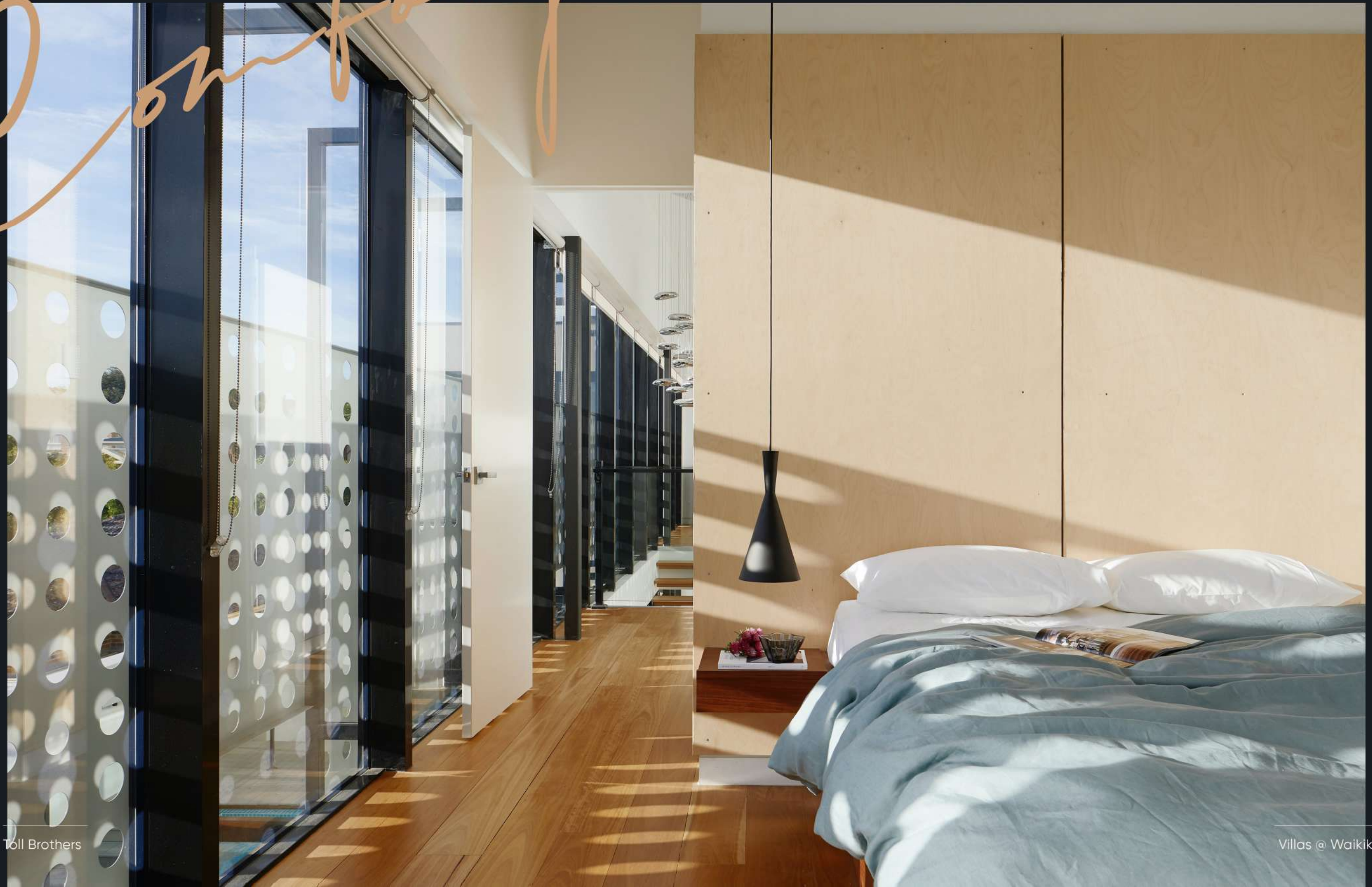
---

COMBINATION OF CLASSICAL  
CONCISE SURFACES AND  
CONTEMPORARY GEOMETRIC  
FORMS.

A thought-through space with everything you need, sensible zoning and impressive views will fit the tastes of people whose life follows the rhythm of the big city.

*Down Party*

Spend quality time in your bedroom without sacrificing the perks of living in your comfort zone. A spacious walk-in closet, two separate bathrooms, a large bedroom combined with a terrace – the dream of a perfect home came true.



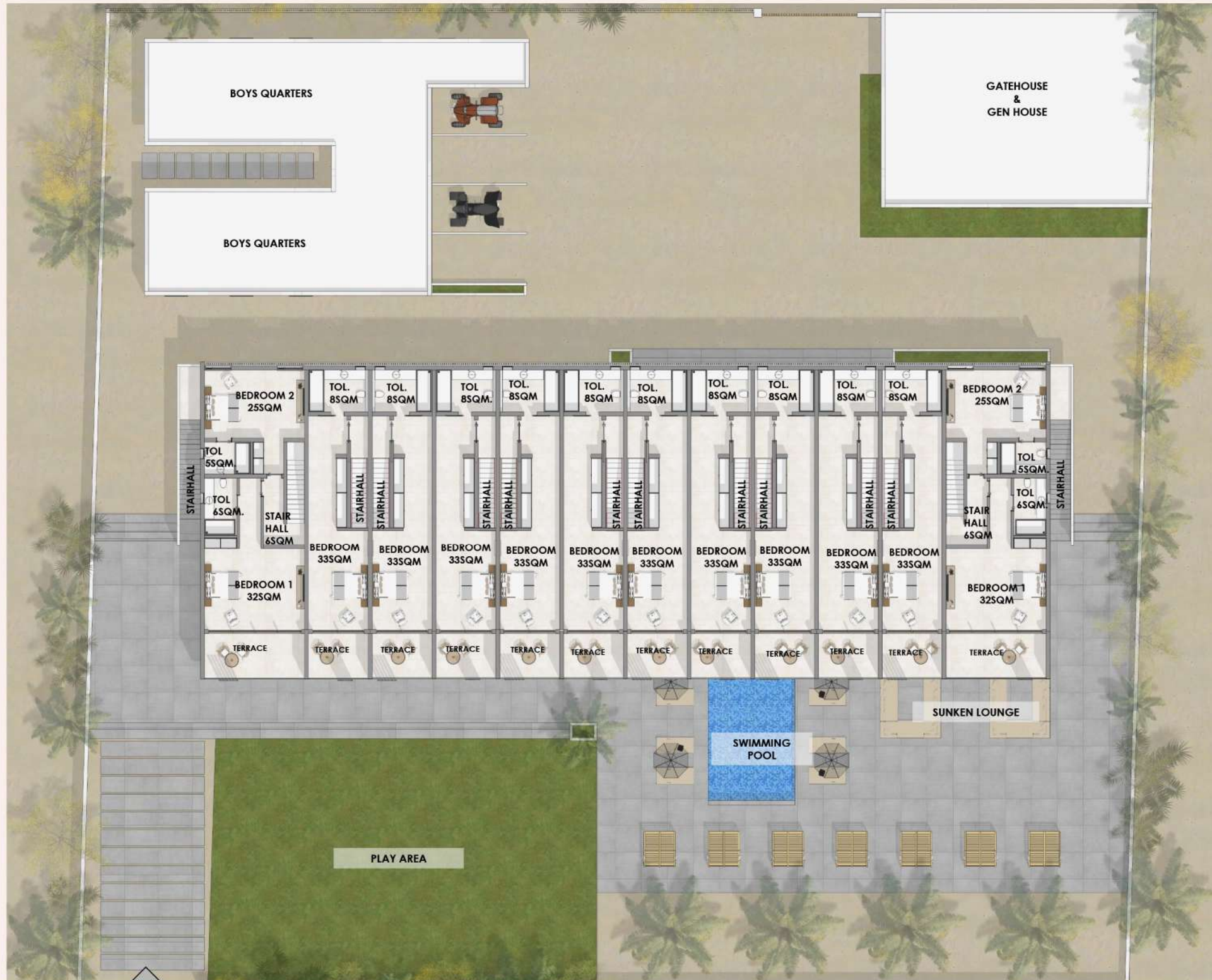


The packed work week is over. You wake from the sunlights puncturing the windows and know that the alarm is not going off today: It's Saturday. You can treat yourself with a lazy half hour in bed.



# Second Floor Plan

- 1
- 2
- 3
- 4
- 5
- 6
- 7



## LEGEND

### TYPICAL APARTMENT (2)

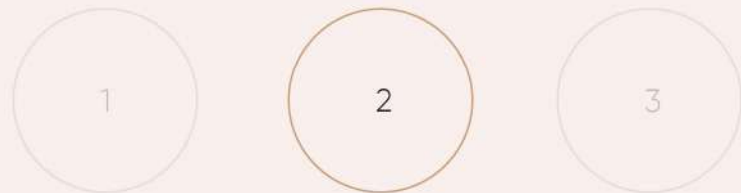
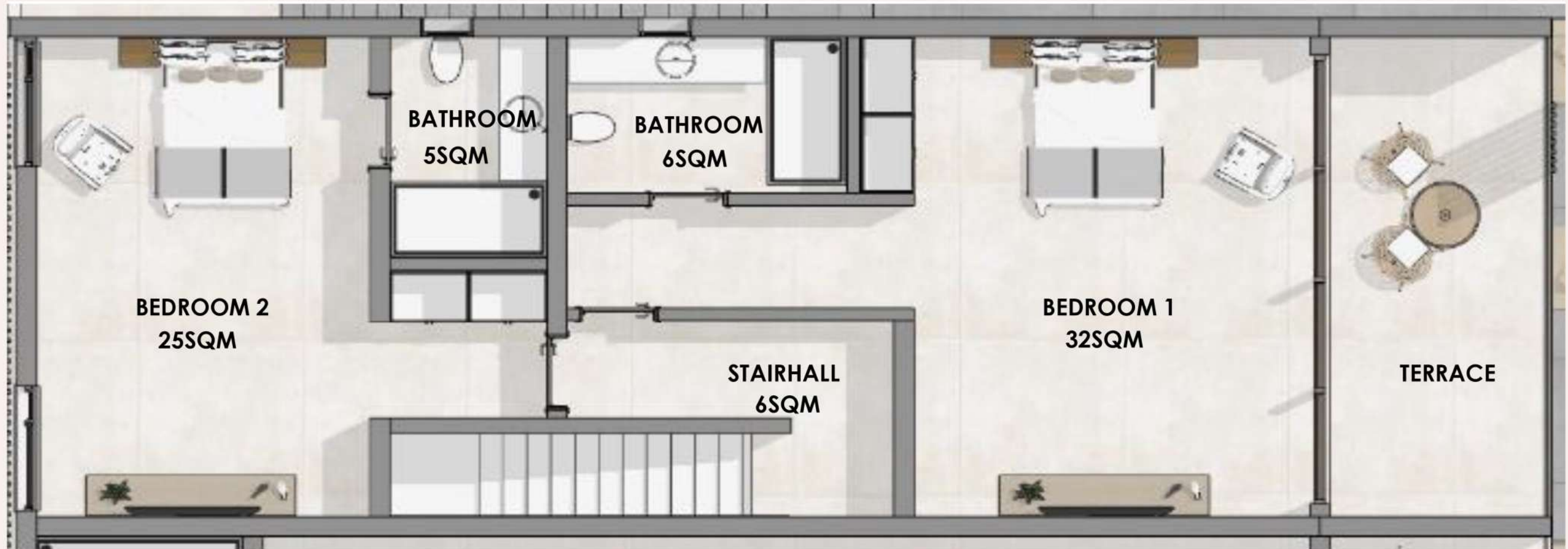
- 1. Bedroom 1 - 32SQM
- 2. Bedroom Toi - 6SQM
- 3. Bedroom 2 - 25SQM
- 4. Bedroom 2 Toi - 5SQM
- 5. Stairhall - 6SQM

### TYPICAL APARTMENT (10)

- 1. Bedroom - 33SQM
- 2. Bedroom Toi - 8SQM
- 3. Stairhall - 2SQM

**Total Area - 578SQM**

## Second Floor Plan - Typical Apartment Layout (Blow-Out) - 74SQM



APARTMENT TYPE A

LEGEND

- 1. Bedroom 1 - 32SQM
- 2. Bedroom Toi - 6SQM
- 3. Bedroom 2 - 25SQM
- 4. Bedroom 2 Toi - 5SQM
- 5. Stairhall - 6SQM

**Total Area - 74SQM**

## Second Floor Plan - Typical Apartment Layout (Blow-Out) - 43SQM

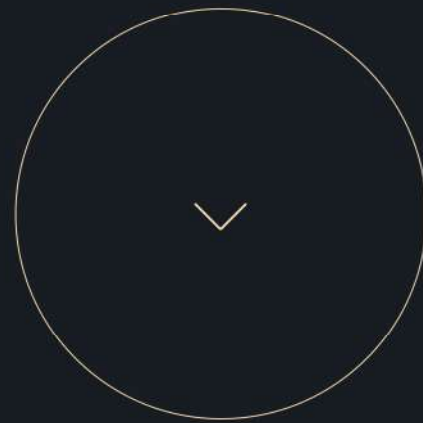


APARTMENT TYPE B

LEGEND

- 1. Bedroom - 33SQM
  - 2. Bedroom Toi - 8SQM
  - 3. Stairhall - 2SQM
- Total Area - 43 SQM**

# 3D Views















+234

080355341111

*Call us*

WWW.TOLLBROTHERSNG.COM

info@tollbrothersng.com

---

1A Goshen Estate Road, Lagos, Nigeria

# Experience Waikiki

